

Neurology®

The most widely read and highly cited peer-reviewed neurology journal
The Official Journal of the American Academy of Neurology



Neurology Publish Ahead of Print

DOI:10.1212/WNL.0000000000207126

Teaching NeuroImage: Reversible Splenial Lesion Syndrome in a 43-Year-Old Man With
Intracerebral Hemorrhage

Author(s):

Tuanfeng Yang, MD¹; Jia Lu, MM¹; Xianzeng Liu, MD¹

Corresponding Author:

Xianzeng Liu, liuxianzeng2004@sina.com

Neurology® Published Ahead of Print articles have been peer reviewed and accepted for publication. This manuscript will be published in its final form after copyediting, page composition, and review of proofs. Errors that could affect the content may be corrected during these processes.

Affiliation Information for All Authors: 1.Department of Neurology, Peking University International Hospital,

Beijing

Equal Author Contribution:

Contributions:

Tuanfeng Yang: Drafting/revision of the manuscript for content, including medical writing for content;

Major role in the acquisition of data

Jia Lu: Analysis or interpretation of data

Xianzeng Liu: Study concept or design; Analysis or interpretation of data

Figure Count:

1

Table Count:

0

Search Terms:

[7] Intracerebral hemorrhage, [120] MRI

Acknowledgment:

Study Funding:

The authors report no targeted funding

Disclosures:

The authors report no relevant disclosures.

Preprint DOI:

Received Date:

2022-08-25

Accepted Date:

2023-01-12

Handling Editor Statement:

Submitted and externally peer reviewed. The handling editor was Resident and Fellow Section Editor

Whitley Aamodt, MD, MPH.

A 43-year-old man with uncontrolled hypertension presented with sudden headache and right homonymous hemianopsia. Brain CT revealed intracerebral hemorrhage and MRI demonstrated a hyperintense lesion on T2-weighted sequence in the splenium of the corpus callosum (Figure). Brain CTA and MRV were unremarkable. Etiological work-up in the blood and CSF were negative. Sixteen days later, the hemorrhage was smaller and the splenial lesion disappeared completely (Figure). Reversible splenial lesion syndrome (RESLES) usually results from antiseizure medication withdrawal, infection (particularly influenza virus), severe hypoglycemia, and hypernatremia^[1].

The clinical manifestation of RESLES is nonspecific, mainly related to the concurrent event and callosal disconnection syndromes have not been reported. RESLES represents a specific clinicoradiologic syndrome with a favorable prognosis and repeated MRI is important to determine whether the lesion is transient. In this case, the splenial cytotoxic lesion may be associated with transient hypoperfusion resulting from the compressive effect of hemorrhage ^[2].

ACCEPTED

WNL-2023-000036_slides --- <http://links.lww.com/WNL/C650>

References

1. Garcia-Monco JC, Cortina IE, Ferreira E, et al. Reversible splenial lesion syndrome (RESLES): what's in a name? [J]. J Neuroimaging, 2011, 21(2): e1-e14.
2. Liu J, Liu D, Yang B, et al. Reversible splenial lesion syndrome (RESLES) coinciding with cerebral venous thrombosis: a report of two cases[J]. Ther Adv Neurol Disord, 2017, 10(12): 375-379.

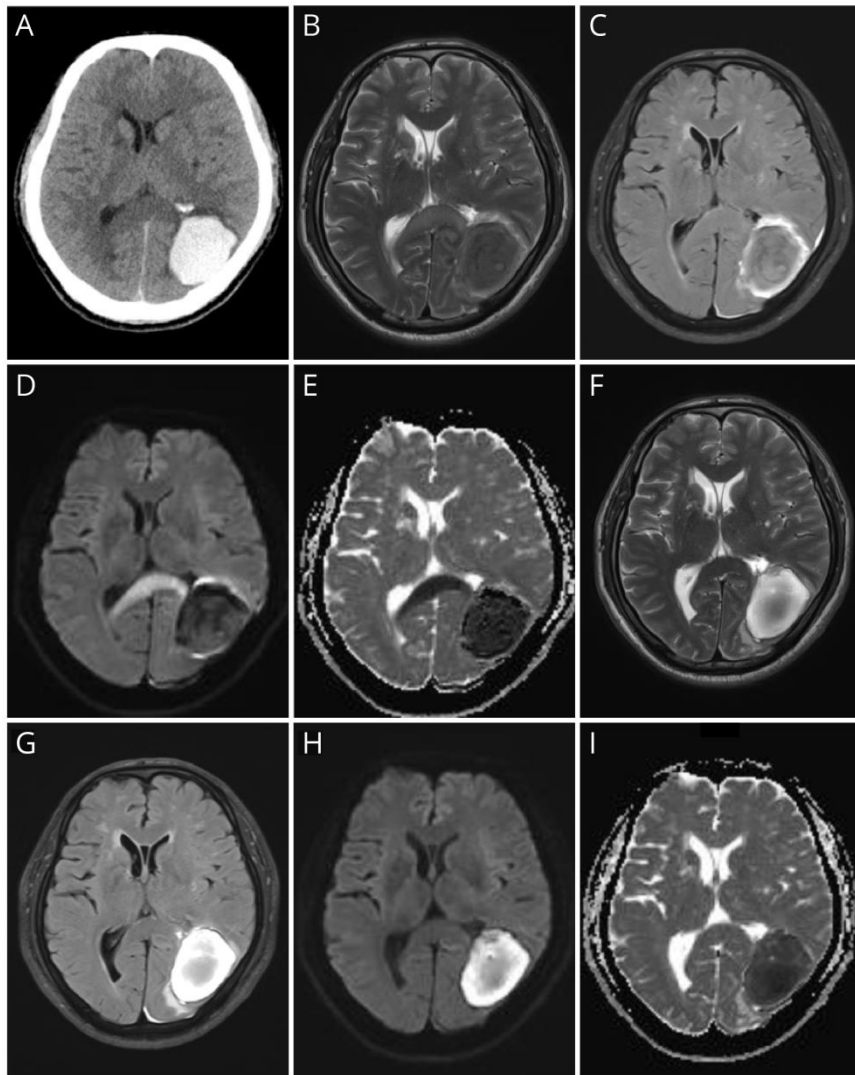


Figure

Brain images

CT revealed intracerebral hemorrhage in the left parietal-occipital lobe (A). Initial MRI demonstrated a round-shaped lesion in the splenium of the corpus callosum, with hyperintense on T2-weighted sequence (B), fluid-attenuated inversion recovery (C) and diffusion-weighted imaging (D), and hypointense on apparent diffusion coefficient map (E). 16-day MRI revealed complete remission of the callosal lesion (F, G, H, I).





ACC

Neurology®

Teaching NeuroImage: Reversible Splenial Lesion Syndrome in a 43-Year-Old Man With Intracerebral Hemorrhage

Tuanfeng Yang, Jia Lu MM and Xianzeng Liu
Neurology published online February 16, 2023
DOI 10.1212/WNL.0000000000207126

This information is current as of February 16, 2023

Updated Information & Services	including high resolution figures, can be found at: http://n.neurology.org/content/early/2023/02/16/WNL.0000000000207126.citation.full
Subspecialty Collections	This article, along with others on similar topics, appears in the following collection(s): Intracerebral hemorrhage http://n.neurology.org/cgi/collection/intracerebral_hemorrhage MRI http://n.neurology.org/cgi/collection/mri
Permissions & Licensing	Information about reproducing this article in parts (figures, tables) or in its entirety can be found online at: http://www.neurology.org/about/about_the_journal#permissions
Reprints	Information about ordering reprints can be found online: http://n.neurology.org/subscribers/advertise

Neurology® is the official journal of the American Academy of Neurology. Published continuously since 1951, it is now a weekly with 48 issues per year. Copyright © 2023 American Academy of Neurology. All rights reserved. Print ISSN: 0028-3878. Online ISSN: 1526-632X.

