

Teaching NeuroImage: Ultrafast Dynamic CT Myelography for the Identification of Leakage Level in Multiple Meningeal Diverticula

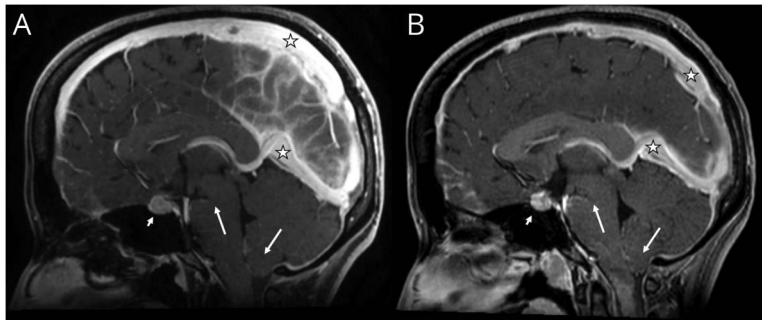
Bernardo Corrêa de Almeida Teixeira, MD, PhD, Afonso Henrique de Aragão, MD, Camila Carneiro Ferreira, MD, Mohammed Ali Hussein, MD, and Kristofer Fingerle Ramina, MD

Neurology® 2023;100:213-214. doi:10.1212/WNL.0000000000201497

Correspondence

Dr. de Almeida Teixeira
berteixeira@gmail.com

Figure 1 Brain MRI



Midline sagittal T1-weighted contrast-enhanced images showing diffuse venous sinus engorgement (stars), pituitary enlargement with effacement of the suprasellar cistern (short arrows), and sagging of posterior fossa structures with reduced mamillopontine distance (long arrows). MRI at first presentation (A) and 1 year later after relapsing symptoms and before surgical treatment (B).

A 26-year-old woman presented with symptoms of orthostatic headache for 1 year that temporarily improved after 2 nontargeted epidural blood patches. Despite this intervention, she had persistent radiologic signs of CSF hypotension (Figure 1) and multiple meningeal diverticula on conventional CT myelography (Figure 2, A and C). Ultrafast dynamic CT myelography confirmed only 1 T8-T9 right-side meningeal diverticula in the initial phases (Figure 2, B and D), with later opacification of the remaining diverticula. Surgical treatment resulted in symptom resolution.

Ultrafast dynamic CT myelography can identify ventral dural tears, leaking meningeal diverticula and CSF-venous fistula, with superior contrast and temporal resolution than MRI. Greater radiation exposure is necessary^{1,2} and should be balanced against diagnostic precision.

Study Funding

The authors report no targeted funding.

Disclosure

The authors reports no relevant disclosures. Go to [Neurology.org/N](https://www.neurology.org/N) for full disclosures.

MORE ONLINE

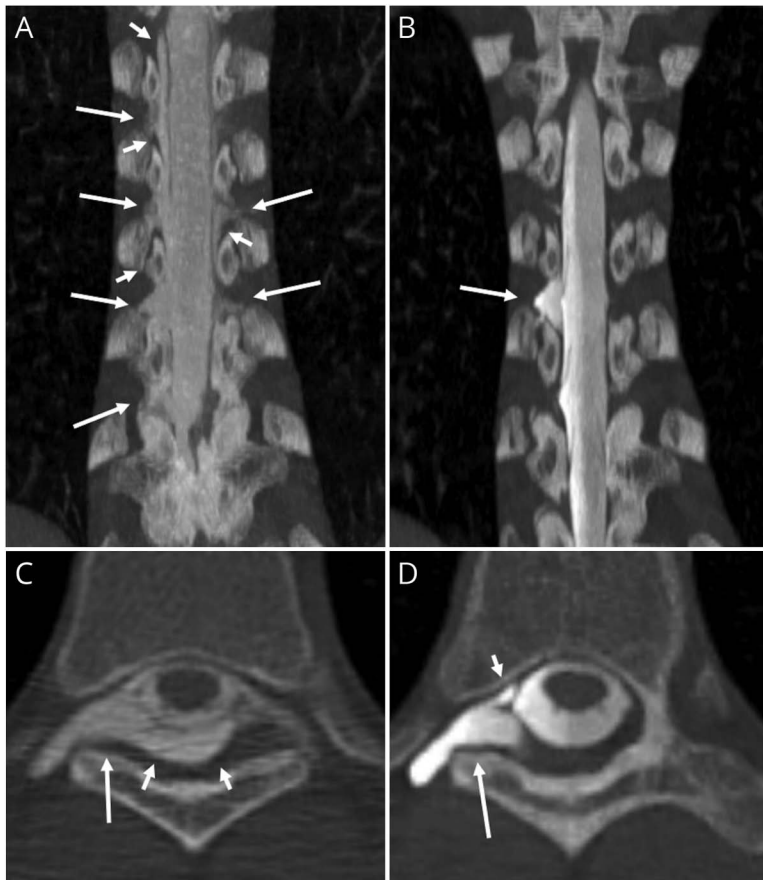
Teaching slides

links.lww.com/WNL/C462

From the Instituto de Neurologia de Curitiba (B.C.d.A.T., A.H.d.A., C.C.F., M.A.H., K.F.R.); and Universidade Federal do Paraná (B.C.d.A.T.), Brazil.

Go to [Neurology.org/N](https://www.neurology.org/N) for full disclosures. Funding information and disclosures deemed relevant by the authors, if any, are provided at the end of the article.

Figure 2 CT Myelography



Coronal conventional CT myelography shows multiple meningeal diverticula (long arrows) and leakage of intrathecal contrast to the epidural spaces (short arrows) (A, C). Ultrafast dynamic myelography shows opacification of only 1 large diverticula at the right side of T8-T9 (B, D) in the initial phases, with later opacification of the remaining diverticula (not shown).

Publication History

Received by *Neurology* June 3, 2022. Accepted in final form September 15, 2022. Submitted and externally peer reviewed. The handling editor was Roy Stowd III, MD, Med, MS.

Appendix Authors

Name	Location	Contribution
Bernardo Corrêa de Almeida Teixeira MD, PhD	Instituto de Neurologia de Curitiba, Paraná, Brazil; Universidade Federal do Paraná, Brazil	Drafting/revision of the manuscript for content, including medical writing for content; major role in the acquisition of data; study concept or design; analysis or interpretation of data
Afonso Henrique de Aragão, MD	Instituto de Neurologia de Curitiba, Paraná, Brazil;	Major role in the acquisition of data; analysis or interpretation of data
Camila Carneiro Ferreira, MD	Instituto de Neurologia de Curitiba, Paraná, Brazil;	Major role in the acquisition of data; analysis or interpretation of data

Appendix (continued)

Name	Location	Contribution
Mohammed Ali Hussein, MD	Instituto de Neurologia de Curitiba, Paraná, Brazil;	Major role in the acquisition of data; analysis or interpretation of data
Kristofer Fingerle Ramina, MD	Instituto de Neurologia de Curitiba, Paraná, Brazil;	Drafting/revision of the manuscript for content, including medical writing for content; major role in the acquisition of data; analysis or interpretation of data

References

1. Thielen KR, Sillery JC, Morris JM, et al. Ultrafast dynamic computed tomography myelography for the precise identification of high-flow cerebrospinal fluid leaks caused by spiculated spinal osteophytes. *J Neurosurg Spine*. 2015;22(3):324-331.
2. Dobrocky T, Nicholson P, Hani L, et al. Spontaneous intracranial hypotension: searching for the CSF leak. *Lancet Neurol*. 2022;21(4):369-380.

Neurology[®]

Teaching NeuroImage: Ultrafast Dynamic CT Myelography for the Identification of Leakage Level in Multiple Meningeal Diverticula

Bernardo Corrêa de Almeida Teixeira, Afonso Henrique de Aragão, Camila Carneiro Ferreira, et al.

Neurology 2023;100:213-214 Published Online before print November 2, 2022

DOI 10.1212/WNL.0000000000201497

This information is current as of November 2, 2022

Updated Information & Services	including high resolution figures, can be found at: http://n.neurology.org/content/100/4/213.full
References	This article cites 2 articles, 0 of which you can access for free at: http://n.neurology.org/content/100/4/213.full#ref-list-1
Subspecialty Collections	This article, along with others on similar topics, appears in the following collection(s): Cerebrospinal Fluid http://n.neurology.org/cgi/collection/cerebrospinal_fluid CT http://n.neurology.org/cgi/collection/ct Low pressure syndrome http://n.neurology.org/cgi/collection/low_pressure_syndrome
Permissions & Licensing	Information about reproducing this article in parts (figures, tables) or in its entirety can be found online at: http://www.neurology.org/about/about_the_journal#permissions
Reprints	Information about ordering reprints can be found online: http://n.neurology.org/subscribers/advertise

Neurology® is the official journal of the American Academy of Neurology. Published continuously since 1951, it is now a weekly with 48 issues per year. Copyright © 2022 American Academy of Neurology. All rights reserved. Print ISSN: 0028-3878. Online ISSN: 1526-632X.

