

Clinical Reasoning: A 40-Year-Old Woman Presenting With Encephalopathy and Paraparesis

Al-Alya AlSabah, BSc, MD, Vincent Brissette, MDCM, and Robert Daniel Altman, MD, FRCPC

Neurology® 2023;101:e94-e98. doi:10.1212/WNL.0000000000207125

Correspondence

Dr. Brissette
vbris032@uottawa.ca

Abstract

Patients with acute to subacute multifocal neurologic abnormalities often have a unique presentation, and their diagnosis and management can be challenging. We present the case of a 40-year-old patient who presented with a 4-day history of confusion, bradyphrenia, right facial droop, bilateral lower limb weakness, urinary incontinence, and hypothermia. This case highlights the diagnostic approach to patients with subacute multifocal neurologic abnormalities, the importance of considering coexisting systemic illnesses in the diagnosis, and their management. Readers will explore the diagnostic steps our group has considered to reach our final diagnosis and the importance of management for our leading diagnosis.

From the Department of Neurology (A.-A.), Faculty of Medicine and Health Sciences, McGill University, Montreal, Quebec; Department of Medicine (Neurology) (V.B.), Faculty of Medicine, University of Ottawa, Ontario; Department of Neurology and Neurosurgery (R.D.A.), Jewish General Hospital, McGill University, Montreal, Quebec, Canada.

Go to [Neurology.org/N](https://www.neurology.org/N) for full disclosures. Funding information and disclosures deemed relevant by the authors, if any, are provided at the end of the article.

Section 1

A 40-year-old previously healthy woman with no medical or neurologic history presented to the emergency department after sustaining a fall. There was a 4-day history of confusion, bilateral lower limb weakness, and urinary incontinence. There was no history of back pain or trauma. She was hypothermic (34.6°C), her heart rate was 100 beats per minute, and she had normal blood pressure and oxygen saturation. On physical examination, she had a dry hyperpigmented rash over her shins, back, and buttocks. There was no evidence of active arthritis or facial rash. She was noted to have urinary retention. Her neck was supple, and she had a normal respiratory, cardiovascular, and abdominal examination.

On the mental status examination, she was alert but bradyphrenic, oriented only to person with a digit span of 4. Cranial nerve examination was normal except for asymmetrical right-sided facial weakness, sparing the forehead. Motor examination showed bilateral lower limb weakness (from 1/5 for bilateral hip extension to 4-/5 for bilateral plantar flexion), hypotonia, and absent deep tendon reflexes. Despite the confusion, our patient could participate in a sensory examination which failed to elicit a sensory level to pinprick, and crude joint position sense was intact.

Questions for Consideration:

1. Where is the lesion?
2. What is your differential diagnosis?
3. What should be the next steps in the diagnostic process?

GO TO SECTION 2

Section 2

Due to bilateral lower limb weakness, urinary retention, and autonomic dysfunction, we initially localized this patient's pathology to the CNS, and most likely predominantly involving the spinal cord. We localized her lesion to the thoracolumbosacral level because the upper limbs were intact. The deficits involved the lateral corticospinal and descending autonomic tracts to the sacral center for bladder control, sparing the lateral spinothalamic tract and dorsal columns. The encephalopathy was hypothesized to be due to the hypothermia itself or bilateral diffuse cortical dysfunction from an infectious, inflammatory, or metabolic process, and the hypotonia due to spinal shock. The upper motor neuron facial weakness hinted at possible subcortical or bulbar involvement.

Infectious encephalitis with transverse myelitis was the main differential. There was no history of vitamin deficiencies, malnutrition, nor heavy alcohol abuse to support a Wernicke encephalopathy. The subacute progression made a vascular event unlikely. In addition, in the absence of a personal or family history of cancer or B symptoms, a neoplastic process was initially lower on the differential.

We obtained a complete blood count and coagulation study (both were within normal limits), and a lumbar puncture (LP) was performed. The CSF analysis showed a white blood cell (WBC) count of $109 \times 10^6/L$ (normal = $0-5 \times 10^6/L$) that was polynucleated (95% neutrophils), a red blood cell (RBC) count of $147 \times 10^6/L$ (normal = none), a protein concentration of 3.22 g/L (normal = 0.15–0.55 g/L), and a glucose concentration of 0.8 mmol/L (normal = 2.2–3.9 mmol/L). Antimicrobials were started hastily covering for *Mycoplasma pneumoniae*, *Listeria*, meningococcal meningitis, and *Streptococcus pneumoniae*. We sent meningitis

multiplex testing on CSF (BioFire M/E) that included *E. coli*, *Hemophilus influenzae*, *Listeria*, *Neisseria*, *Streptococcus agalactia* (Group B), *Streptococcus pneumoniae*, cytomegalovirus, antiviral, HSV-1, HSV-2, HHV-6, parechovirus, VZV, and cryptococcus. We also tested for *Mycoplasma* with serum titers (IgM) and BioFire nasopharyngeal swab (PCR). CSF mycoplasma PCR was not pursued given the clinical evolution and presentation (e.g., lack of respiratory symptoms), and the literature review indicating that CSF PCR testing lacks sensitivity.¹ All results returned negative.

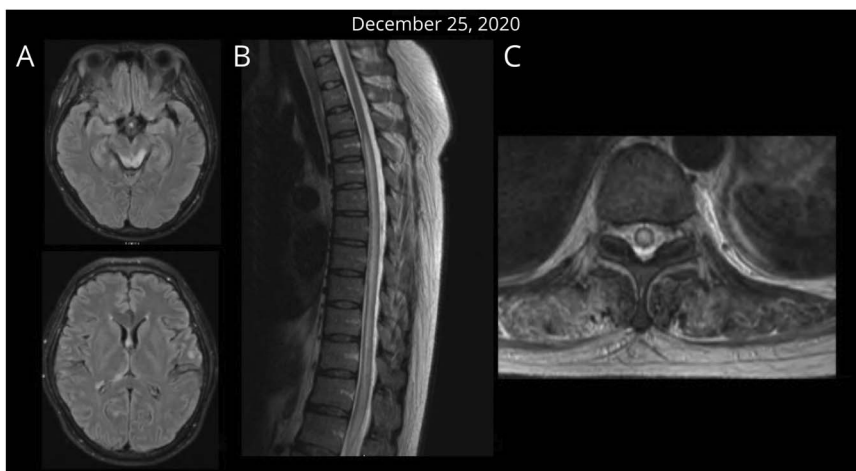
Because of low CSF glucose, we wanted to rule out neurosarcoidosis, tuberculosis (TB), and leptomeningeal carcinomatosis. CSF cytopathology, TB cultures, a PET scan, and a CT scan of the chest, abdomen, and pelvis were performed and were negative for granulomatous disease and malignancy.

A MRI of the entire neuraxis was performed without gadolinium because she had an acute kidney injury (infectious/inflammatory vs obstructive uropathy with secondary acute kidney injury). The brain MRI revealed extensive abnormal areas of T2-hyperintense signal in the dorsal medial right thalamus, with bilateral patchy hypothalamic involvement, also involving the anterolateral pons bilaterally and the tegmentum, scattered foci in the medulla, scattered foci in the cerebellum hemispheres, and diffusion signal in the centrum semiovale, corona radiata, and internal capsule bilaterally. The spine MRI revealed diffuse myelopathy beginning at T3-4 and extending to the tip of the conus medullaris; the signal abnormality was predominantly central, including gray and white matter involvement (Figure 1).

Given the Above Results:

1. Can you narrow down the differential diagnosis?
2. What additional tests do you want to order?

Figure 1 MRI (C-) Brain and Spine at Initial Presentation Demonstrating Extensive T2/FLAIR Hyperintense Lesions in the (A) Midbrain, Thalamus, and Juxtacortical Regions, (B) T2 Longitudinally Extensive Transverse Myelitis on Spine, With (C) Central Cord Involvement on Axial Sequences



GO TO SECTION 3

Section 3

Given the abnormal signal changes on MRI that involved the hypothalamus, thalamus, periependymal surface of the fourth ventricle, and dorsal medulla, in addition to the longitudinally extensive transverse myelitis (LETM), we suspected neuromyelitis optica spectrum disorder (NMOSD). However, the robust inflammatory CSF results raised some doubts about NMOSD. Her CSF showed neutrophilic pleocytosis, which is uncommon with NMOSD, but previously demonstrated to be associated with AQP4-antibody-positive NMOSD.² Therefore, we extended the differential to include autoimmune/neuroinflammatory diseases (systemic lupus erythematosus (SLE)-related myelitis and Sjogren syndrome).

With careful consideration, she was given high-dose methylprednisolone (1g/d IV) for 5 days. After the renal function normalized, a contrast-enhanced (C+) MRI of the orbits was performed and showed no evidence of optic neuropathy/neuritis. On the second day of hospitalization and day 1 of methylprednisolone, the patient developed hemolytic anemia that was initially considered drug-induced because of ceftriaxone or autoimmune.

We sent an extensive rheumatologic workup given the rash and the possible autoimmune hemolytic anemia. She was found to have low complements (C3 = 31 mg/dL, normal = 80–190 mg/dL; C4 < 2 mg/dL, normal = 10–50 mg/dL), high antinuclear antibodies (1:640 IU/mL, homogenous cytoplasmic), and anti-double-stranded DNA (>800; ≥100 is positive). Our patient fulfilled SLE criteria by having dermatologic involvement, hemolytic anemia, CNS symptoms, and positive serum antibodies.³ Given the severity of her deficits, we started plasmapheresis (PLEX) (6 sessions in total).

Repeat LP 10 days after her initial presentation to assess for residual inflammation showed normalization of her CSF

parameters, which can be observed with transverse myelitis associated with SLE.⁴ Rituximab was started as maintenance therapy, anticipating she would test positive for NMOSD, as the 2 autoimmune diseases can coexist.⁵ Her serum anti-myelin oligodendrocyte glycoprotein and anti-aquaporin 4 (AQP4) antibodies sent before we started PLEX returned negative.

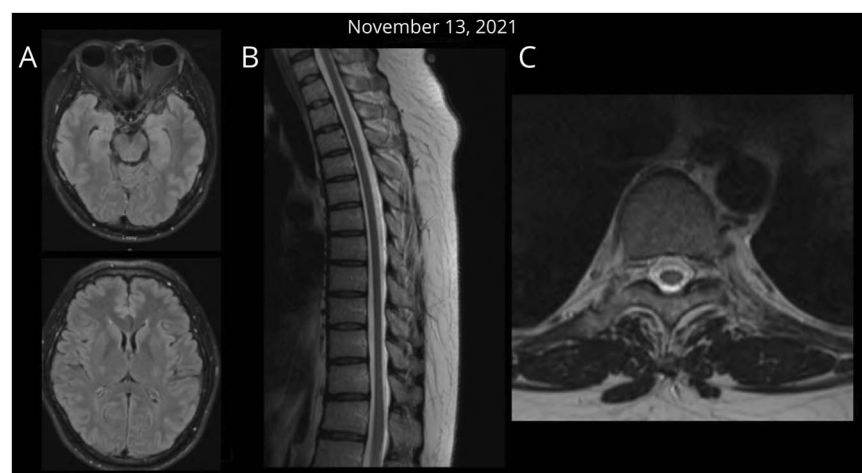
She was hospitalized for 1 month, improved significantly, was discharged to neuro-rehab and could walk 2 months after her initial presentation. A repeat MRI without contrast of her neuraxis 10 months and 19 days after her initial MRI entirely normalized. There were no new signal abnormalities in the brain and cervical spinal cord (Figure 2).

Discussion

Our patient was diagnosed with seronegative NMOSD and SLE. SLE is an autoimmune condition which can have neuropsychiatric manifestations, stroke, seizures, and peripheral neuropathy.³ Myelopathy is a CNS manifestation seen in 1%–3% of patients with SLE.⁴ One study found that the most common cerebral MRI finding in neuro-SLE was nonspecific white matter hyperintensities followed by gray matter hyperintensities and brain atrophy.⁶ Our patient's initial MRI was suspicious for NMOSD, a group of central nervous system inflammatory disorders characterized by severe, immune-mediated demyelination and axonal damage predominantly attacking the optic nerves and spinal cord.⁷ This patient's serum anti-AQP4 antibodies were negative; however, anti-AQP4 antibodies can become positive years after disease onset; hence, it is important to continue serial serum samplings for AQP4 antibodies.⁸

Nevertheless, this patient meets the 2015 international panel for seronegative NMOSD because of core clinical characteristics (LETM and diencephalic clinical syndrome) and MRI brain T2-

Figure 2 MRI (C-) Full Resolution of the Diffuse Inflammatory Encephalomyelitis (LETM) in a Repeat MRI (C-) 10 months and 19 days After Initial Presentation



(Normal axial view of the brain (A), normal sagittal view of the spine (B), and normal axial view of the spine (C)).

hyperintense lesions involving the diencephalon, dorsal medulla, and periependymal brainstem lesions.⁷ Several case reports show that SLE can coexist with NMOSD. One population study reported that 6.7% of SLE patients with neuropsychiatric symptoms tested positive for anti-AQP4 antibodies with myelitis.⁹

First-line treatment for SLE and NMOSD is identical, which involves high-dose steroids and plasma exchange.⁵ The use of intravenous immunoglobulin (IVIG) in addition to high-dose intravenous steroids has also been shown to be superior to high-dose intravenous steroids alone,^{10,11} but IVIG alone is not recommended.¹¹ However, although acute treatment for both diseases overlaps, long-term treatment and immunosuppression can differ. For instance, hydroxychloroquine is used in patients with SLE to reduce disease flares, but not in NMOSD.⁵ In addition, using steroid-sparing agents may be influenced by coexisting end-organ damage seen with SLE associated with NMOSD. For example, in patients with lupus nephritis without NMOSD, the drug of choice would be cyclophosphamide or mycophenolate mofetil, but in patients with lupus nephritis with NMOSD, cyclophosphamide has been shown to be ineffective.¹² Similarly, in patients diagnosed with NMOSD, frequently used immunosuppressants are rituximab and azathioprine,¹² but using rituximab for patients with SLE and lupus nephritis is controversial given that some studies failed to prove its superiority over placebo, whereas others support its clinical effectiveness and safety.^{13,14} It is of interest that despite differences in long-term management, the prognosis for recovery of strength is similar for patients with combined SLE-transverse myelitis (TM) and NMOSD compared with SLE-TM alone with appropriate treatment.¹⁵

In summary, it is essential to consider the coexistence of SLE and NMOSD, as while acute treatment overlaps, long-term immunosuppression varies with the diagnosis. Specifically, it can be extremely challenging to tease apart lupus myelitis from seronegative NMOSD, and the existence of end-organ involvement seen with SLE can affect the choice of immunosuppressants and overall prognosis.

Study Funding

The authors report no targeted funding.

Disclosure

The authors report no disclosures relevant to the manuscript. Go to [Neurology.org/N](https://www.neurology.org/N) for full disclosures.

Publication History

Received by *Neurology* June 23, 2022. Accepted in final form January 12, 2023. Submitted and externally peer reviewed. The handling editor was Resident and Fellow Section Editor Whitley Aamodt, MD, MPH.

Appendix Authors

Name	Location	Contribution
Al-Alya AlSabah, BSc, MD	Department of Neurology, Faculty of Medicine and Health Sciences, McGill University, Montreal, Quebec, Canada	Drafting/revision of the manuscript for content, including medical writing for content; major role in the acquisition of data; additional contributions: first author of this paper.
Vincent Brissette, MDCM	Department of Medicine (Neurology), Faculty of Medicine, University of Ottawa, Ontario, Canada	Drafting/revision of the manuscript for content, including medical writing for content
Robert Daniel Altman, MD, FRCPC	Department of Neurology and Neurosurgery, Jewish General Hospital, McGill University, Montreal, Quebec, Canada	Drafting/revision of the manuscript for content, including medical writing for content

References

- Meyer Sauter PM, Jacobs BC, Spuesens EBM, et al. Antibody responses to Mycoplasma pneumoniae: role in pathogenesis and diagnosis of encephalitis? *Plos Pathog*. 2014;10(6):e1003983. doi:10.1371/journal.ppat.1003983
- Jarius S, Paul F, Franciotta D, et al. Cerebrospinal fluid findings in aquaporin-4 antibody positive neuromyelitis optica: results from 211 lumbar punctures. *J Neurol Sci*. 2011;306(1-2):82-90. doi:10.1016/j.jns.2011.03.038
- Aringer M, Costenbader K, Daikh D, et al. 2019 European league against rheumatism/American College of Rheumatology Classification criteria for systemic lupus erythematosus. *Arthritis Rheumatol*. 2019;71(9):1400-1412. doi:10.1002/art.40930
- Łukjanowicz M, Brzosko M. Myelitis in the course of systemic lupus erythematosus: review. *Polish Arch Intern Med*. 2009;119(1-2):67-73. doi:10.20452/pamw.608
- Ochi MGS, Shapiro SC, Melamed E. Lupus and NMOSD: the Blending of Humoral autoimmunity. *Case Rep Rheumatol*. 2020;2020:8820071. doi:10.1155/2020/8820071
- Jeong HW, Her M, Bae JS, et al. Brain MRI in neuropsychiatric lupus: associations with the 1999 ACR case definitions. *Rheumatol Int*. 2015;35(5):861-869. doi:10.1007/s00296-014-3150-8
- Hamid SH, Elson L, Mutch K, Solomon T, Jacob A. The impact of 2015 neuromyelitis optica spectrum disorders criteria on diagnostic rates. *Mult Scler J*. 2017;23(2):228-233. doi:10.1177/1352458516663853
- Shimoyama K, Akahori M, Ishio Y, Yanagihara C. Seroconversion of anti-aquaporin-4 antibody in a patient with neuromyelitis optica spectrum disorder: a case report. *Rinsho Shinkeigaku*. 2022;62(5):351-356. doi:10.5692/clinicalneurology.cn-001626
- Asgari N, Jarius S, Lastrup H, et al. Aquaporin-4 autoimmunity in patients with systemic lupus erythematosus: a predominantly population-based study. *Mult Scler J*. 2018;24(3):331-339. doi:10.1177/1352458517699791
- Lin J, Xue B, Zhu R, et al. Intravenous immunoglobulin as the rescue treatment in NMOSD patients. *Neurol Sci*. 2021;42(9):3857-3863. doi:10.1007/s10072-021-05079-4
- Li X, Tian DC, Fan M, et al. Intravenous immunoglobulin for acute attacks in neuromyelitis optica spectrum disorders (NMOSD). *Mult Scler Relat Disord*. 2020;44:102325. doi:10.1016/j.msard.2020.102325
- Borisow N, Mori M, Kuwabara S, Scheel M, Paul F. Diagnosis and treatment of NMO spectrum disorder and MOG-encephalomyelitis. *Front Neurol*. 2018;9:888. doi:10.3389/fneur.2018.00888
- Rovin BH, Furie R, Latinis K, et al. Efficacy and safety of rituximab in patients with active proliferative lupus nephritis: the lupus nephritis assessment with rituximab study. *Arthritis Rheum*. 2012;64(4):1215-1226. doi:10.1002/art.34359
- Zhong Z, Li H, Zhong H, Zhou T. Clinical efficacy and safety of rituximab in lupus nephritis. *Drug Des Development Ther*. 2019;13:845-856. doi:10.2147/DDDT.S195113
- Zhang S, Wang Z, Zhao J, et al. Clinical features of transverse myelitis associated with systemic lupus erythematosus. *Lupus*. 2020;29(4):389-397. doi:10.1177/0961203320905668

Neurology®

Clinical Reasoning: A 40-Year-Old Woman Presenting With Encephalopathy and Paraparesis

Al-Alya AlSabah, Vincent Brissette and Robert Daniel Altman
Neurology 2023;101:e94-e98 Published Online before print March 1, 2023
DOI 10.1212/WNL.0000000000207125

This information is current as of March 1, 2023

Updated Information & Services	including high resolution figures, can be found at: http://n.neurology.org/content/101/1/e94.full
References	This article cites 15 articles, 0 of which you can access for free at: http://n.neurology.org/content/101/1/e94.full#ref-list-1
Subspecialty Collections	This article, along with others on similar topics, appears in the following collection(s): All Demyelinating disease (CNS) http://n.neurology.org/cgi/collection/all_demyelinating_disease_cns Autoimmune diseases http://n.neurology.org/cgi/collection/autoimmune_diseases Lupus http://n.neurology.org/cgi/collection/lupus
Permissions & Licensing	Information about reproducing this article in parts (figures, tables) or in its entirety can be found online at: http://www.neurology.org/about/about_the_journal#permissions
Reprints	Information about ordering reprints can be found online: http://n.neurology.org/subscribers/advertise

Neurology® is the official journal of the American Academy of Neurology. Published continuously since 1951, it is now a weekly with 48 issues per year. Copyright © 2023 American Academy of Neurology. All rights reserved. Print ISSN: 0028-3878. Online ISSN: 1526-632X.

