

# Teaching NeuroImage: Reversible Splenial Lesion Syndrome in a 43-Year-Old Man With Intracerebral Hemorrhage

Tuanfeng Yang, MD, Jia Lu, MM, and Xianzeng Liu, MD

*Neurology*® 2023;101:e101-e102. doi:10.1212/WNL.0000000000207126

**Correspondence**

Dr. Liu

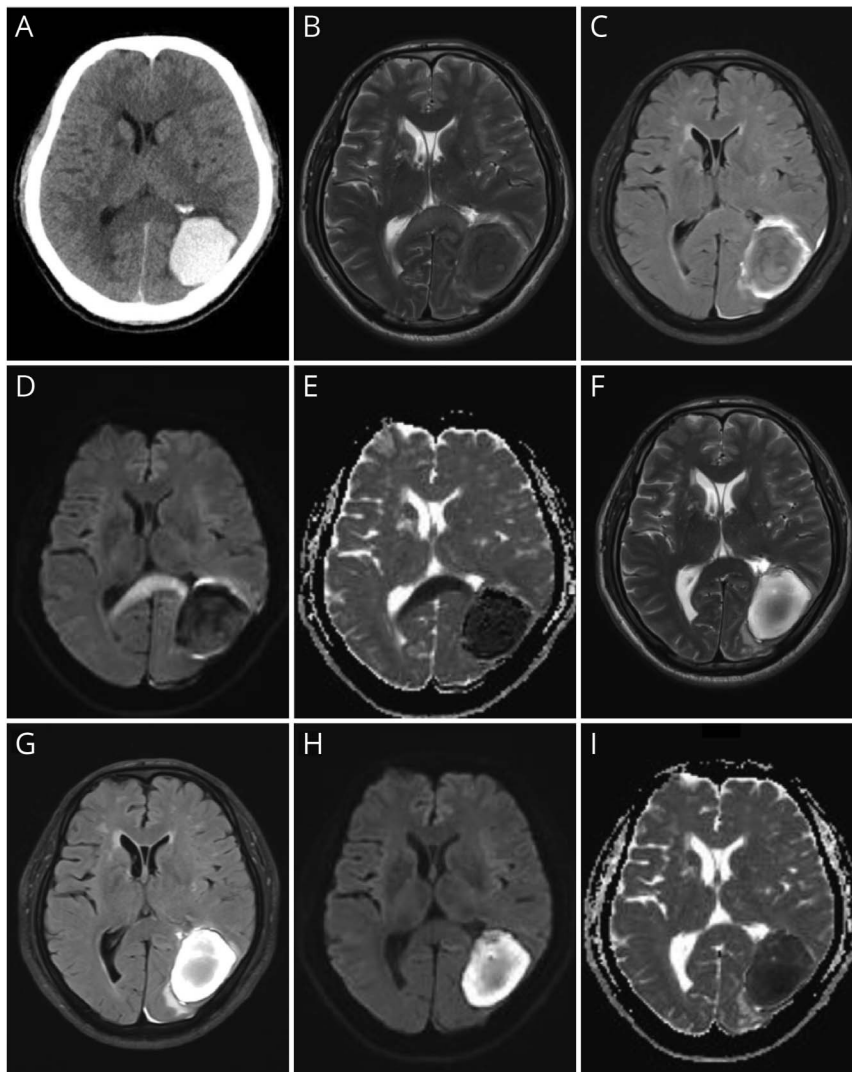
liuxianzeng2004@sina.com

## Figure Brain Images

## MORE ONLINE

### Teaching slides

[links.lww.com/WNL/C650](https://links.lww.com/WNL/C650)



CT revealed intracerebral hemorrhage in the left parietal-occipital lobe (A). Initial MRI demonstrated a round-shaped lesion in the splenium of the corpus callosum, hyperintense on T2-weighted sequence (B), fluid-attenuated inversion recovery (C), and diffusion-weighted imaging (D) and hypointense on apparent diffusion coefficient map (E). 16-day MRI revealed complete remission of the callosal lesion (F-I).

A 43-year-old man with uncontrolled hypertension presented with a sudden headache and right homonymous hemianopsia. A brain CT revealed intracerebral hemorrhage, and an MRI examination

From the Department of Neurology, Peking University International Hospital, Beijing, China.

Go to [Neurology.org/N](https://www.neurology.org/N) for full disclosures.

Copyright © 2023 American Academy of Neurology

Copyright © 2023 American Academy of Neurology. Unauthorized reproduction of this article is prohibited.

demonstrated a hyperintense lesion on T2-weighted sequence in the splenium of the corpus callosum (Figure). Brain CTA and MRV were unremarkable. Etiologic workup in the blood and CSF was unrevealing. Sixteen days later, the hemorrhage was smaller and the splenial lesion disappeared completely (Figure). Reversible splenial lesion syndrome (RESLES) usually results from antiepileptic medication withdrawal, infection (particularly influenza virus), severe hypoglycemia, and hypernatremia.<sup>1</sup> The clinical manifestation of RESLES is nonspecific, mainly related to the concurrent event, and callosal disconnection syndromes have not been reported. RESLES represents a specific clinico-radiologic syndrome with a favorable prognosis, and repeated MRI is important to determine whether the lesion is transient. In this case, the splenial cytotoxic lesion may be associated with transient hypoperfusion resulting from the compressive effect of hemorrhage.<sup>2</sup>

### Author Contributions

T. Yang: drafting/revision of the article for content, including medical writing for content; major role in the acquisition of

data. J. Lu: analysis or interpretation of data. X. Liu: study concept or design; analysis or interpretation of data.

### Study Funding

The authors report no targeted funding.

### Disclosure

The authors report no relevant disclosures. Go to [Neurology.org/N](https://www.neurology.org/N) for full disclosures.

### Publication History

Received by *Neurology* August 25, 2022. Accepted in final form January 12, 2023. Submitted and externally peer reviewed. The handling editor was Resident and Fellow Section Editor Whitley Aamodt, MD, MPH.

### References

1. Garcia-Monco JC, Cortina IE, Ferreira E, et al. Reversible splenial lesion syndrome (RESLES): what's in a name? *J Neuroimaging*. 2011;21(2):e1-e14.
2. Liu J, Liu D, Yang B, et al. Reversible splenial lesion syndrome (RESLES) coinciding with cerebral venous thrombosis: a report of two cases. *Ther Adv Neurol Disord*. 2017; 10(12):375-379.

# Neurology®

## Teaching NeuroImage: Reversible Splenic Lesion Syndrome in a 43-Year-Old Man With Intracerebral Hemorrhage

Tuanfeng Yang, Jia Lu and Xianzeng Liu

*Neurology* 2023;101:e101-e102 Published Online before print February 16, 2023

DOI 10.1212/WNL.0000000000207126

**This information is current as of February 16, 2023**

<b>Updated Information &amp; Services</b>	including high resolution figures, can be found at: <a href="http://n.neurology.org/content/101/1/e101.full">http://n.neurology.org/content/101/1/e101.full</a>
<b>References</b>	This article cites 2 articles, 0 of which you can access for free at: <a href="http://n.neurology.org/content/101/1/e101.full#ref-list-1">http://n.neurology.org/content/101/1/e101.full#ref-list-1</a>
<b>Subspecialty Collections</b>	This article, along with others on similar topics, appears in the following collection(s): <b>Intracerebral hemorrhage</b> <a href="http://n.neurology.org/cgi/collection/intracerebral_hemorrhage">http://n.neurology.org/cgi/collection/intracerebral_hemorrhage</a> <b>MRI</b> <a href="http://n.neurology.org/cgi/collection/mri">http://n.neurology.org/cgi/collection/mri</a>
<b>Permissions &amp; Licensing</b>	Information about reproducing this article in parts (figures, tables) or in its entirety can be found online at: <a href="http://www.neurology.org/about/about_the_journal#permissions">http://www.neurology.org/about/about_the_journal#permissions</a>
<b>Reprints</b>	Information about ordering reprints can be found online: <a href="http://n.neurology.org/subscribers/advertise">http://n.neurology.org/subscribers/advertise</a>

*Neurology*® is the official journal of the American Academy of Neurology. Published continuously since 1951, it is now a weekly with 48 issues per year. Copyright © 2023 American Academy of Neurology. All rights reserved. Print ISSN: 0028-3878. Online ISSN: 1526-632X.

