

Teaching NeuroImages: Neuropathy caused by *Mycobacterium leprae*

A. Mendes, MD
P. Abreu, MD
A. Oliveira, MD
L. Castro, MD
S. Carpenter, MD

Address correspondence and reprint requests to Dr. Amélia Mendes, Neurology Department of Hospital de S. João, Alameda Hernâni Monteiro, 4200 Porto, Portugal
mendes.amelia@gmail.com

A 52-year-old Brazilian woman presented with numbness and paresthesias in both feet for 6 months. Clinical history revealed nonspecific discomfort in her right foot and recurrent red spots on abdomen and back for 4 years. Examination disclosed cutaneous lesions (figure 1) and EMG showed a chronic, mainly sensory axonal polyneuropathy. Biopsy was diagnostic of leprosy neuropathy (figure 2). After starting multidrug therapy, cutaneous lesions improved and the neuropathy remained stable.

Leprosy, the most treatable form of peripheral neuropathy, must be considered in the differential

diagnosis of neuropathies with cutaneous lesions, especially if sensory fibers are the most involved.¹

AUTHOR CONTRIBUTIONS

Dr. Mendes: drafting/revising the manuscript, analysis or interpretation of data. Dr. Abreu: drafting/revising the manuscript, analysis or interpretation of data. Dr. Oliveira: drafting/revising the manuscript. Dr. Castro: drafting/revising the manuscript, analysis or interpretation of data. Dr. Carpenter: drafting/revising the manuscript, analysis or interpretation of data, photography.

REFERENCE

1. Panezai S, Saleh FG. Leprosy and peripheral neuropathy. *J Clin Neuromuscul Dis* 2004;5:138–145.

Figure 1 Discoloration of the skin compatible with leprosy cutaneous lesions (arrows)

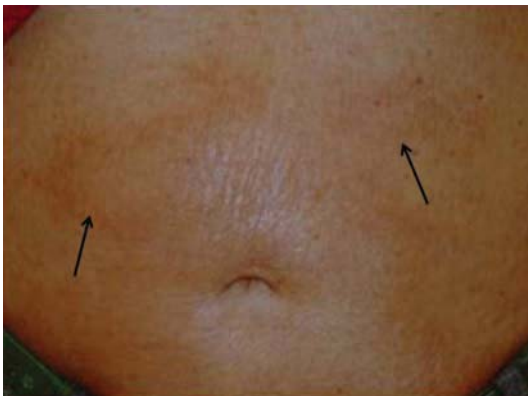
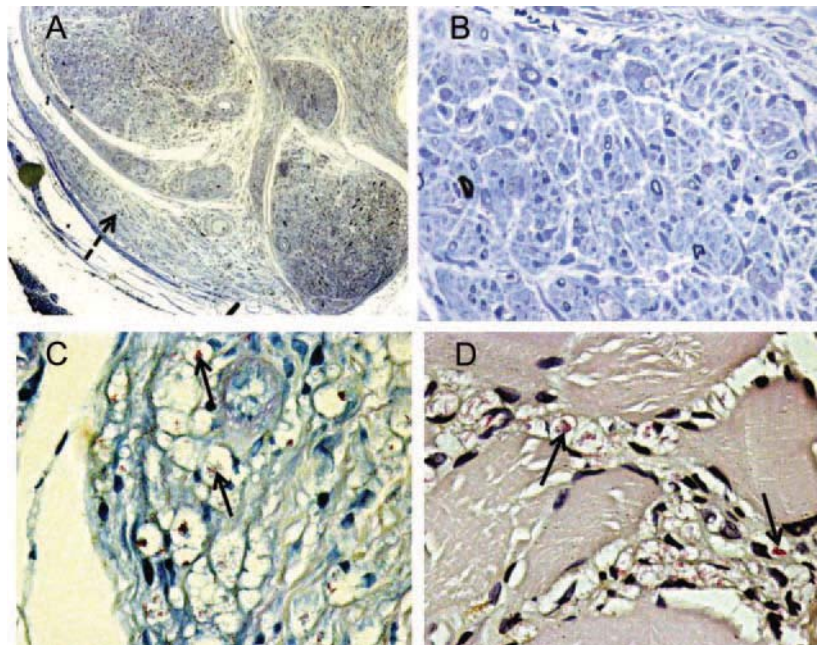


Figure 2 Toluidine blue (A, B) and Fyte stain (C, D)



(A) Inflammatory cells and fibroblasts have proliferated in the subperineurial space (dashed arrow). (B) Extensive loss of myelinated fibers. (C) Vacuolated cells at the edge of a nerve fascicle contain bacilli (arrows). (D) Muscle showed focal accumulations of bacilli in macrophages (arrows).

From the Neurology Department (A.M., P.A., A.O.) and Pathologic Anatomy Department (L.C., S.C.), Hospital de S. João, Porto; and Faculty of Medicine (A.M., P.A., A.O.), University of Porto, Porto, Portugal.

Disclosure: Dr. Mendes, Dr. Abreu, Dr. Oliveira, and Dr. Castro report no disclosures. Dr. Carpenter has received funding for travel from Fondazione Mariani.

Republished from *Neurology* 2010;75(16):e37. doi: 10.1212/WNL.0b013e318228befc

Copyright © 2011 by AAN Enterprises, Inc.

Neurology®

Teaching NeuroImages: Neuropathy caused by *Mycobacterium leprae*

A. Mendes, P. Abreu, A. Oliveira, et al.

Neurology 2023;100;S88

DOI 10.1212/WNL.0000000000206949

This information is current as of April 21, 2023

| | |
|---|---|
| Updated Information & Services | including high resolution figures, can be found at: http://n.neurology.org/content/100/16_Supplement_1/S88.full |
| References | This article cites 1 articles, 0 of which you can access for free at: http://n.neurology.org/content/100/16_Supplement_1/S88.full#ref-list-1 |
| Subspecialty Collections | This article, along with others on similar topics, appears in the following collection(s): All Clinical Neurology http://n.neurology.org/cgi/collection/all_clinical_neurology All Infections http://n.neurology.org/cgi/collection/all_infections Bacterial infections http://n.neurology.org/cgi/collection/bacterial_infections Peripheral neuropathy http://n.neurology.org/cgi/collection/peripheral_neuropathy |
| Permissions & Licensing | Information about reproducing this article in parts (figures, tables) or in its entirety can be found online at: http://www.neurology.org/about/about_the_journal#permissions |
| Reprints | Information about ordering reprints can be found online: http://n.neurology.org/subscribers/advertise |

Neurology® is the official journal of the American Academy of Neurology. Published continuously since 1951, it is now a weekly with 48 issues per year. Copyright © 2011 by AAN Enterprises, Inc.. All rights reserved. Print ISSN: 0028-3878. Online ISSN: 1526-632X.

